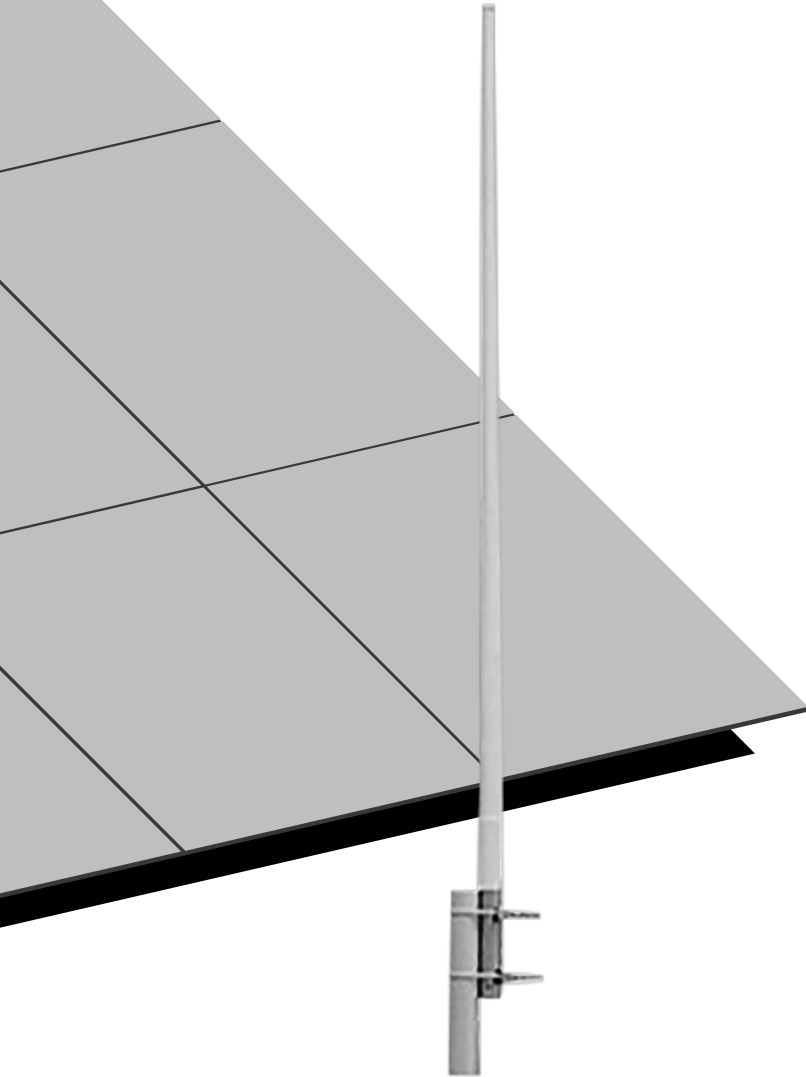


**MJ-400C**

UHF 400 MHz 7.8dBi

Fiberglass Base Antenna



## Features

Superior performance | Lightweight fiberglass radome | All weather operation | Heavy-duty steel mounting brackets

## Specifications

Frequency Range	400 - 480 MHz
Bandwidth	16 MHz
Gain	7.8 dBi
Vertical Beam Width	17 degree
VSWR	$\leq 1.5$
Input Impedance	50 $\Omega$
Maximum Power	100 W
Length	180 cm
Weight	2 kg
Polarization	Vertical
Connector	SL16 or N female
Rated Wind Velocity	60 m/s

**M-Tech Dynamic Corporation Ltd**

Unit 5, 17/F, Grandtech Center, 8 On Ping Street,  
Shatin, New Territories, Hong Kong

M-Tech® trademark is the property of M-Tech Dynamic Corporation Ltd.

