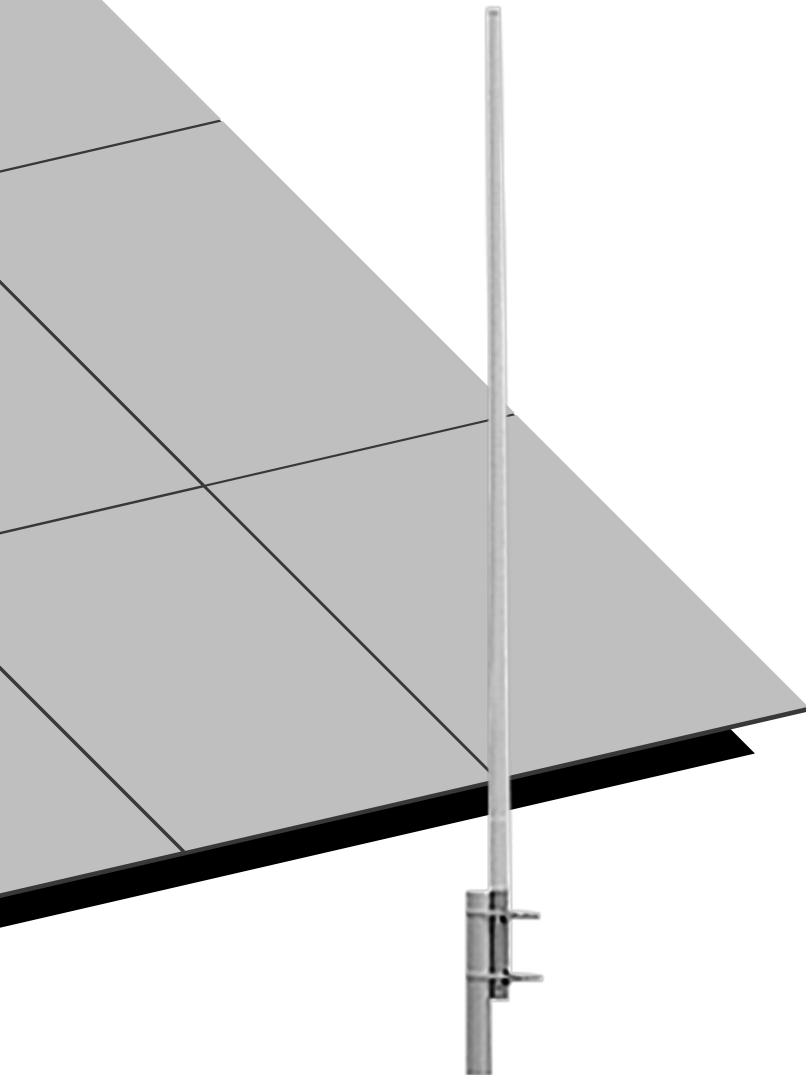


MJ-400E
UHF 400 MHz 8.5 dBi
Base Antenna



Specifications

Frequency Range	400 - 480 MHz
Bandwidth	16 MHz
Gain	8.5 dBi
Vertical Beam Width	14.5 degree
VSWR	≤ 1.5
Input Impedance	50 Ω
Maximum Power	100 W
Length	250 cm
Weight	2.5 kg
Polarization	Vertical
Connector	SL16 or N female
Rated Wind Velocity	60 m/s

M-Tech Dynamic Corporation Ltd

Unit 5, 17/F, Grandtech Center, 8 On Ping Street,
Shatin, New Territories, Hong Kong

M-Tech® trademark is the property of M-Tech Dynamic Corporation Ltd.

