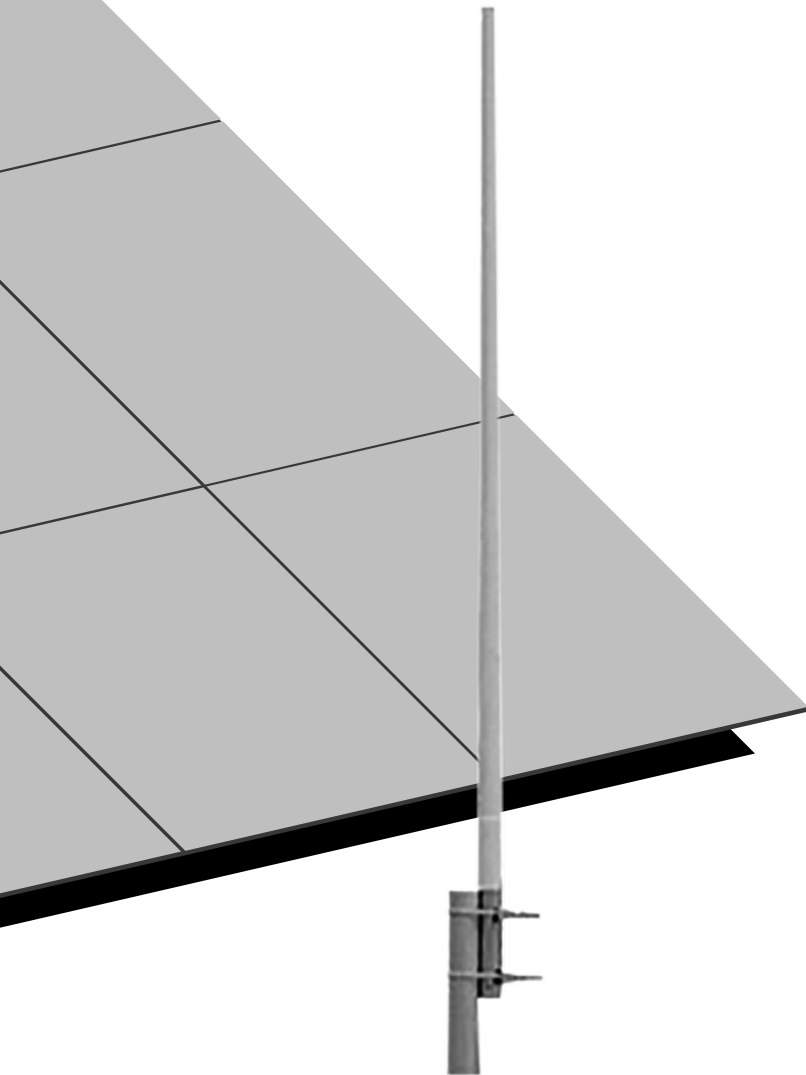


MJ-450Q8

450 MHz Band

Fiberglass Omni Antenna



Features

Point to multipoint systems | Wireless video systems | TETRA system | Wide band, superior performance | Fiberglass radome | All weather operation | Heavy-duty steel mounting brackets

Specifications

Frequency Range	445 - 480 MHz
Bandwidth	35 MHz
Gain	8±1 dBi
Vertical Beam Width	18 degree
VSWR	≤1.5
Input Impedance	50 Ω
Maximum Power	500 W
Length	238 cm
Pole Diameter	40 - 60 mm
Weight	4.5 kg
Polarization	Vertical
Connector	N female
Rated Wind Velocity	60 m/s

M-Tech Dynamic Corporation Ltd

Unit 5, 17/F, Grandtech Center, 8 On Ping Street,
Shatin, New Territories, Hong Kong

M-Tech® trademark is the property of M-Tech Dynamic Corporation Ltd.

